



211 North Lindbergh Blvd.  
 St. Louis, MO 63141  
 800.231.1327 tel. | 314.754.0835 fax  
[specify@anovafurnishings.com](mailto:specify@anovafurnishings.com)  
[anovafurnishings.com](http://anovafurnishings.com)

**BH1830SR— Beacon Hill Recycled Plastic ADA Table with 3 Swivel Seats**

**42" square ADA table with recycled plastic planks and three swivel seats, surface mount.**

**Material**

The ADA table has a 41.52" square tabletop, features three contour swivel seats and meets federal ADA requirements. The tabletop frame is 10-gauge steel and the tabletop and contour seats are composed of 1" x 3.5" (1" x 4" nominal dimensions) recycled plastic planks. The tabletop features a 1.64" diameter umbrella hole in the center and is designed to support 100 lbs. per square foot.

The seats are composed of aluminum and steel plates and are designed to support 200 lbs. per linear foot. The seats swivel 90 degrees to each side for easy entry and exit.

The table frame and legs are made of 2.38" O.D. steel tubing and feature a built-in umbrella holder. The table legs have feet with pre-drilled .4" diameter holes for surface mounting to prevent movement. Table **must be surface mounted** for stability and to comply with warranty and federal regulations; mounting hardware is not included.

The planks are made of 95% recycled content by weight and are impervious to moisture and corrosion, do not require the application of sealants or preservatives, and will never need painting or staining throughout the product's life.

**Finish**

Rust-proof aluminum and rust-resistant primed steel components feature a fade-resistant powder coating. Treated components exceed the industry standard by 34% in testing by independent sources.

**Color**

See website or sales representative for color choices.

**Assembly**

The table requires some assembly. The tabletop and seats ship pre-assembled. Stainless steel assembly hardware is included.

**Maintenance**

The product is virtually maintenance-free and requires only periodic cleaning with a sponge and a solution of mild detergent and water to remove surface dirt. Do not clean with solvent or petroleum base products.

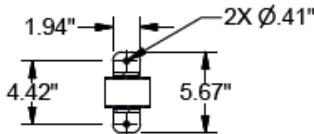
**Warranty**

20-year limited structural warranty on recycled plastic; 3-year finish warranty on powder coated steel and aluminum components against rusting, peeling, chipping, cracking, mold and mildew plastic from the date of purchase. See full details on multi-year warranties for components at [www.anovafurnishings.com/warranty.aspx](http://www.anovafurnishings.com/warranty.aspx).



**Accessories**

- 9' Standard Fabric Color Umbrella 9LPU-CSC
- 9' Premium Fabric Color Umbrella 9LPU-CPC
- Umbrella Brace UBTRACE



FOOT MOUNT

